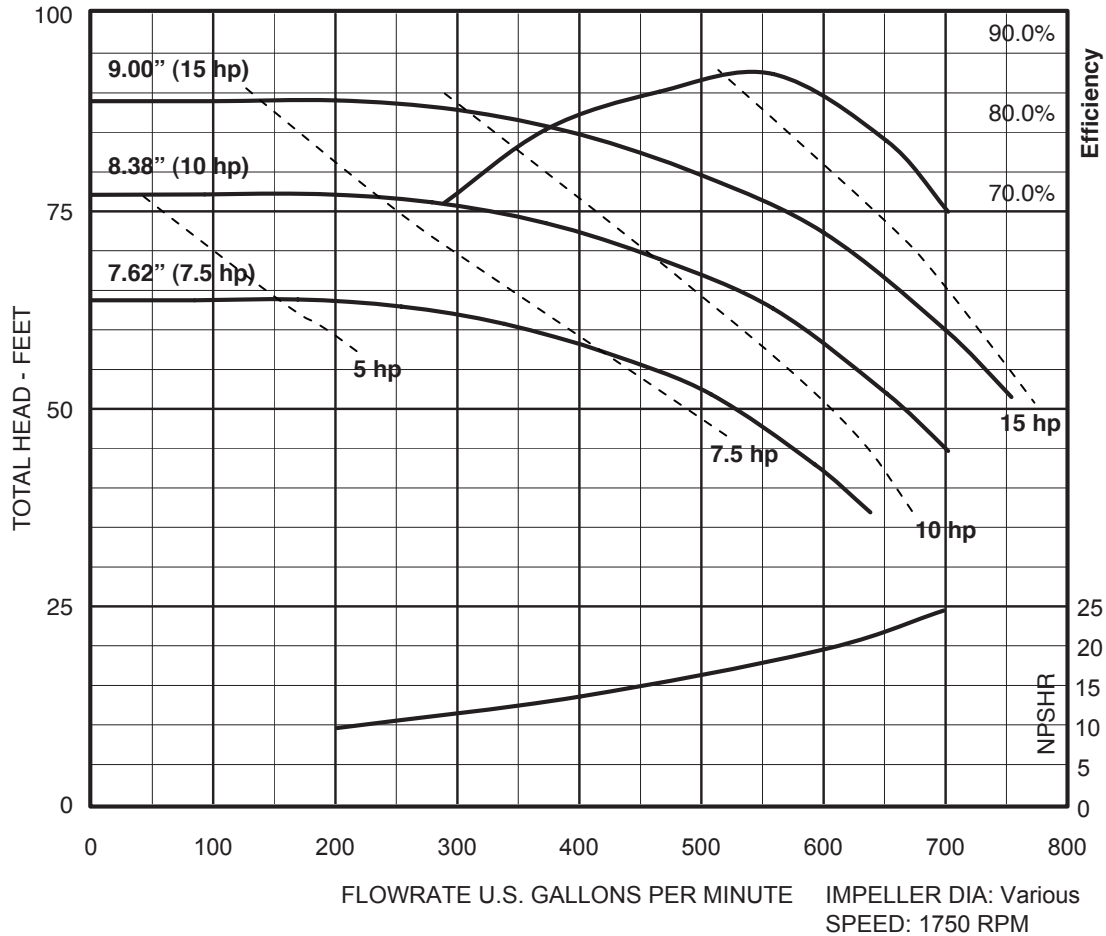


## Close-Coupled 9" 3 x 4 - 9

BOOK: CCI-045  
DATE: Jan. 1, 2012

### Performance Curve:

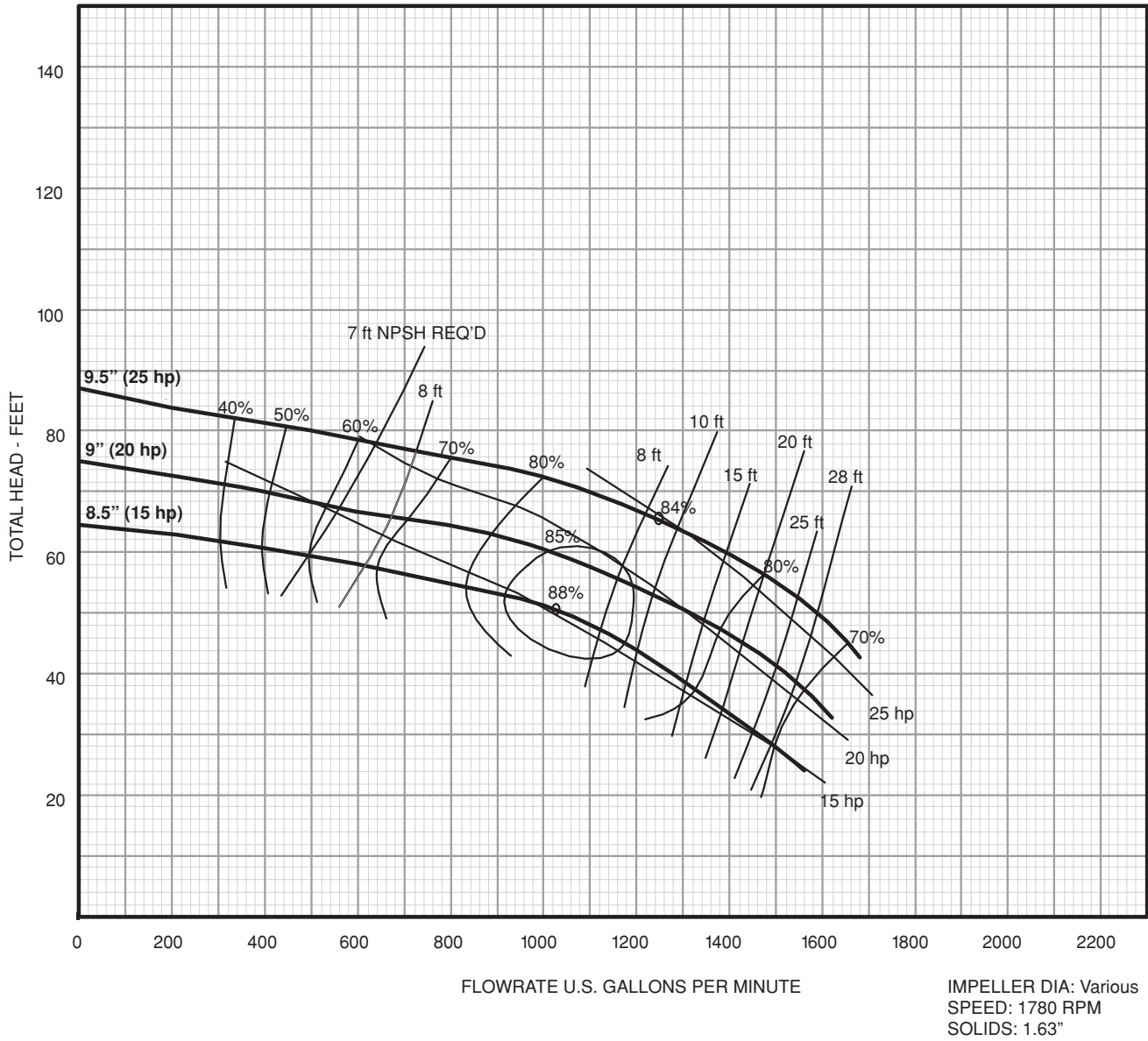
**1800**  
Nominal



**Close-Coupled 10" 6 x 8 - 10L**

**Performance Curve:**

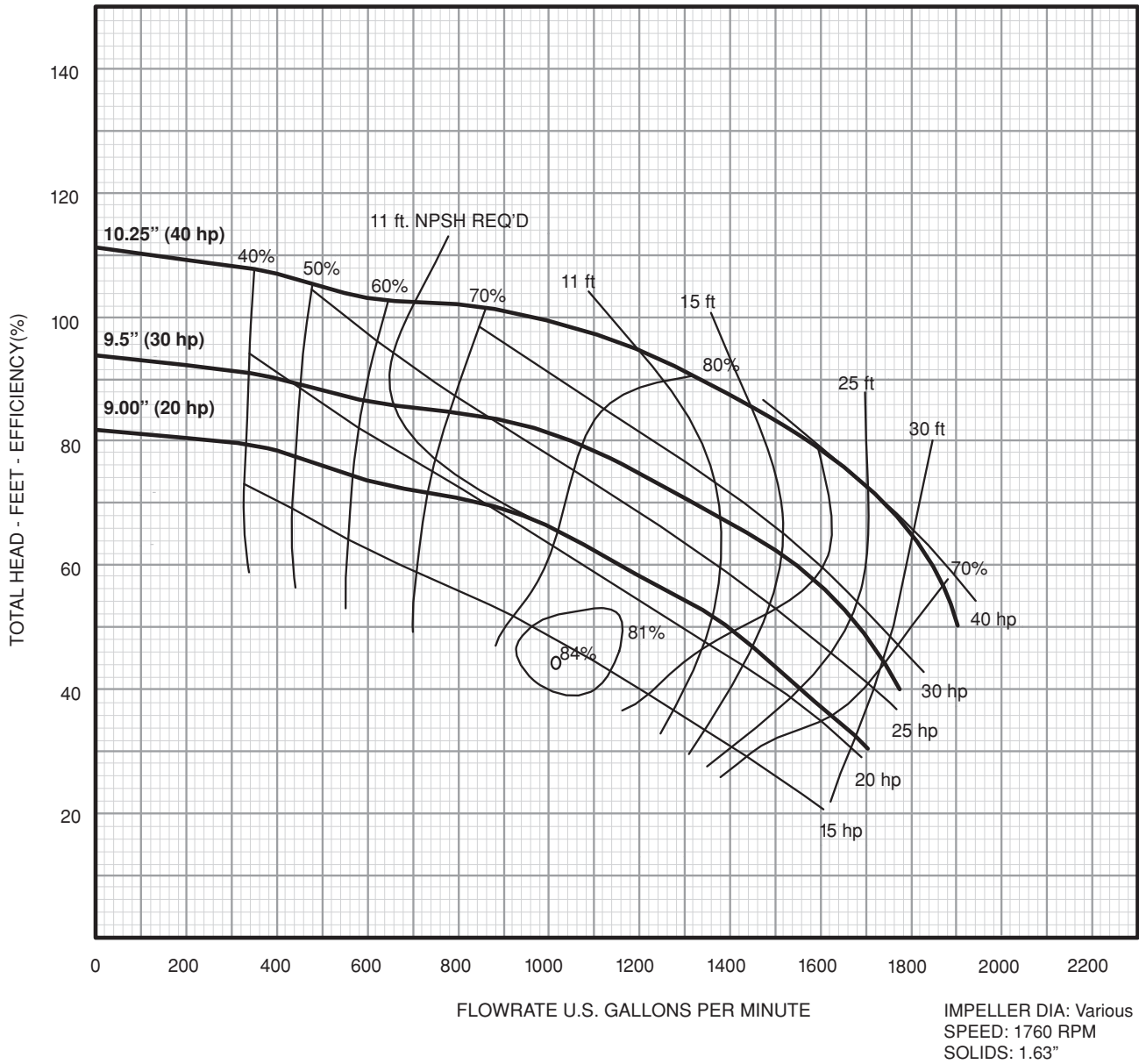
**1800**  
Nominal



## Close-Coupled 10" 6 x 8 - 10

**Performance Curve:**

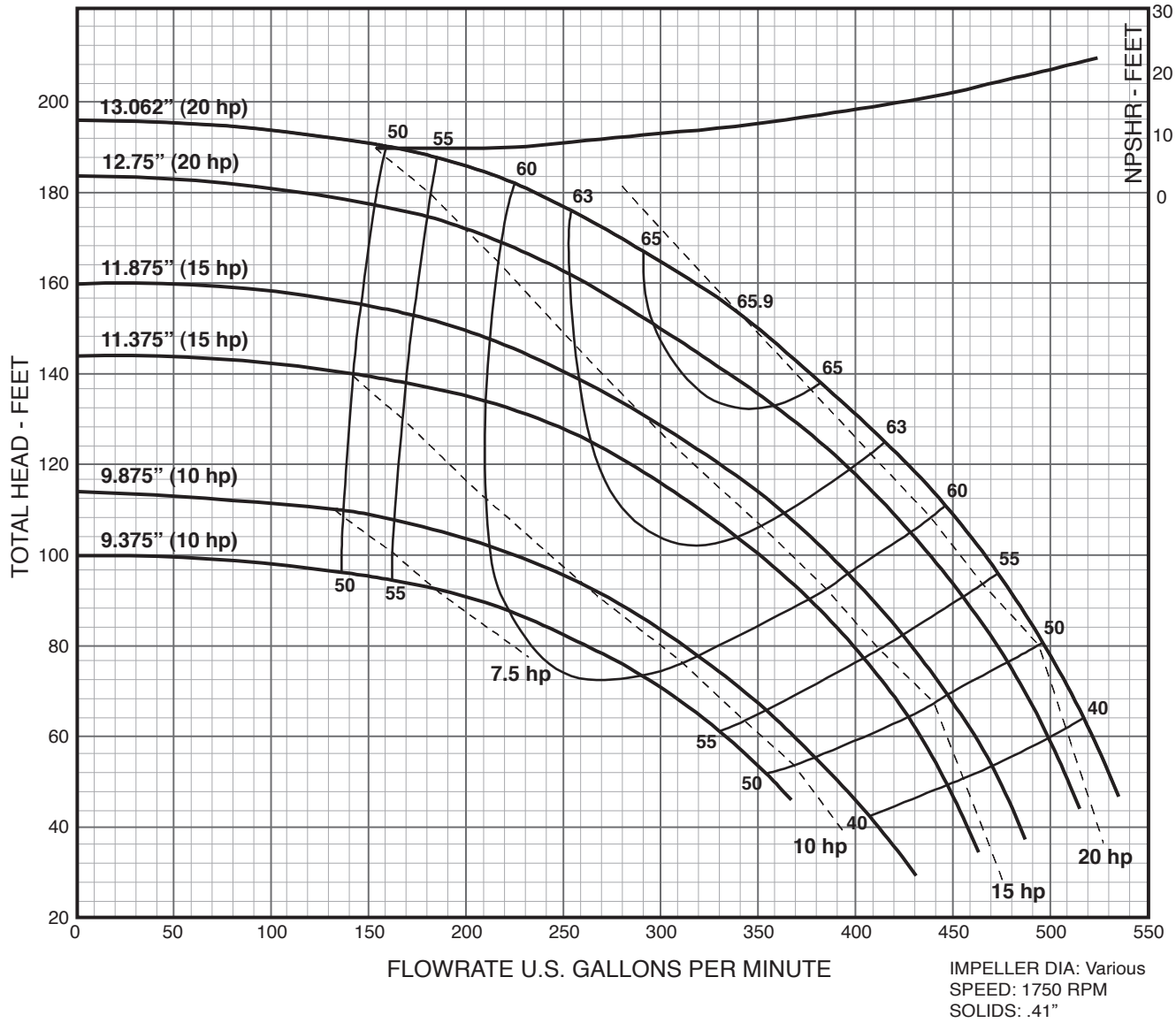
**1800**  
Nominal



## Close-Coupled 13" 2.5 x 3 - 13

**Performance Curve:**

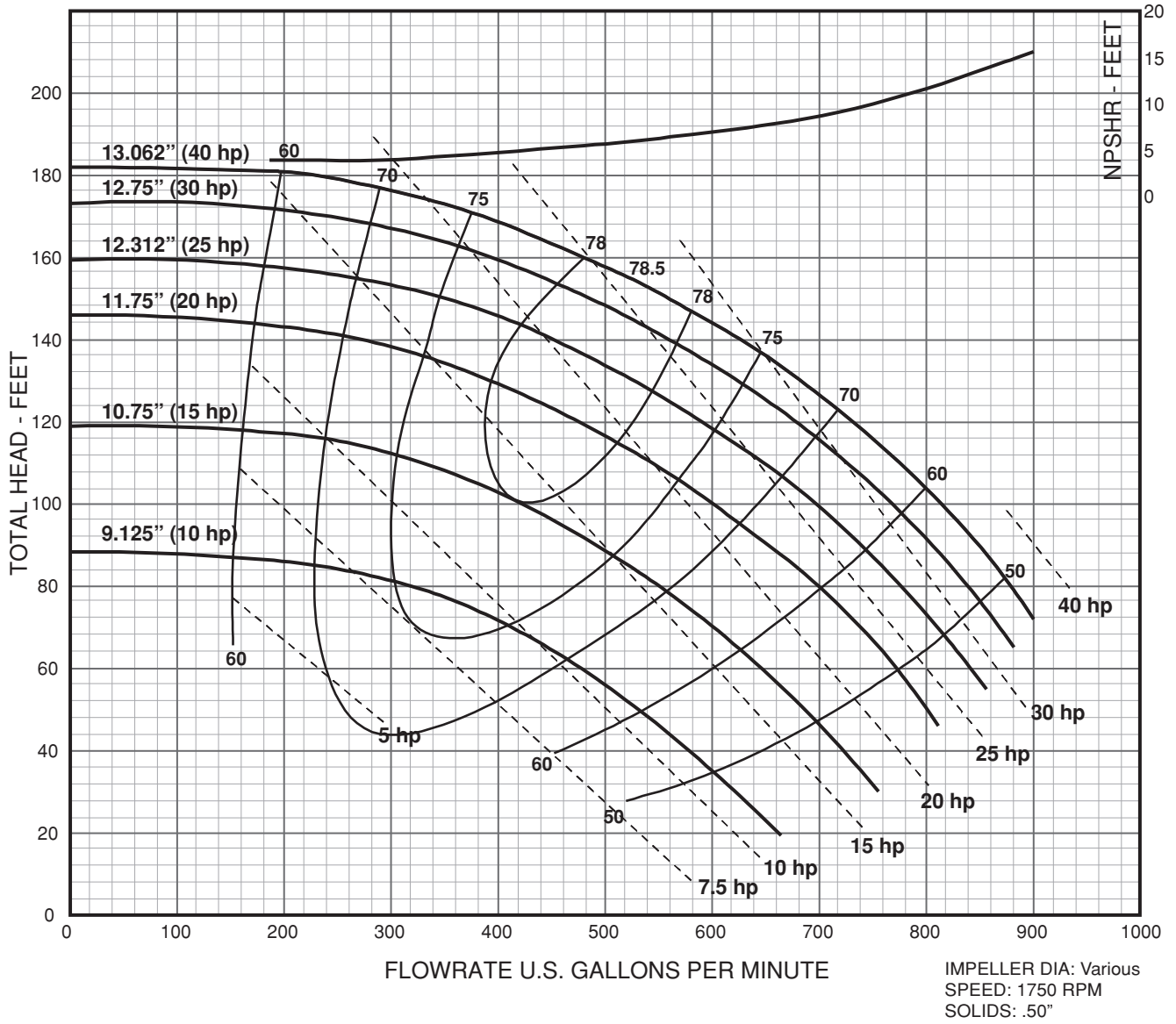
**1800**  
Nominal



## Close-Coupled 13" 3 x 4 - 13

### Performance Curve:

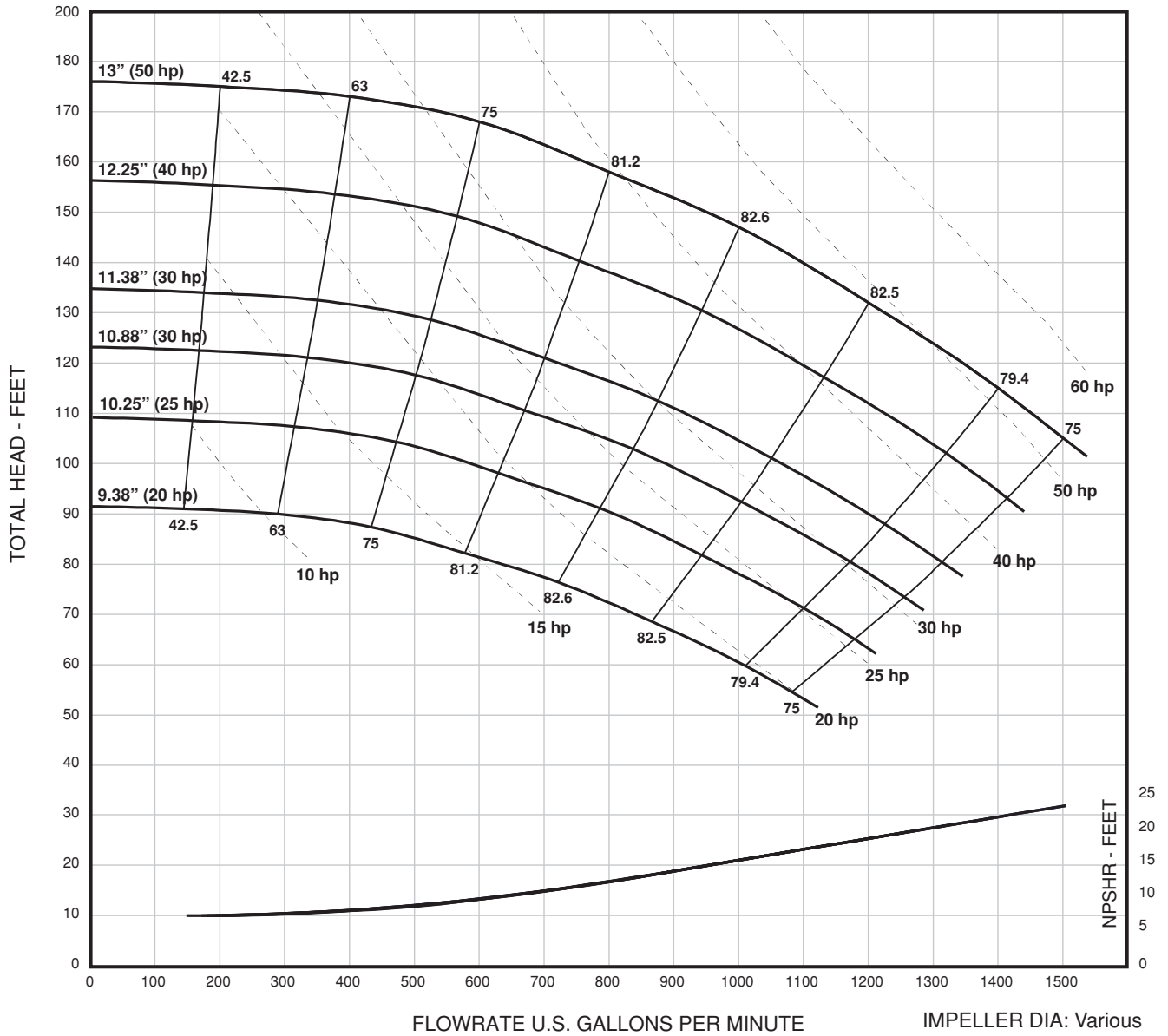
**1800**  
Nominal



## Close-Coupled 13" 4 x 6 - 13H

### Performance Curve:

**1800**  
Nominal

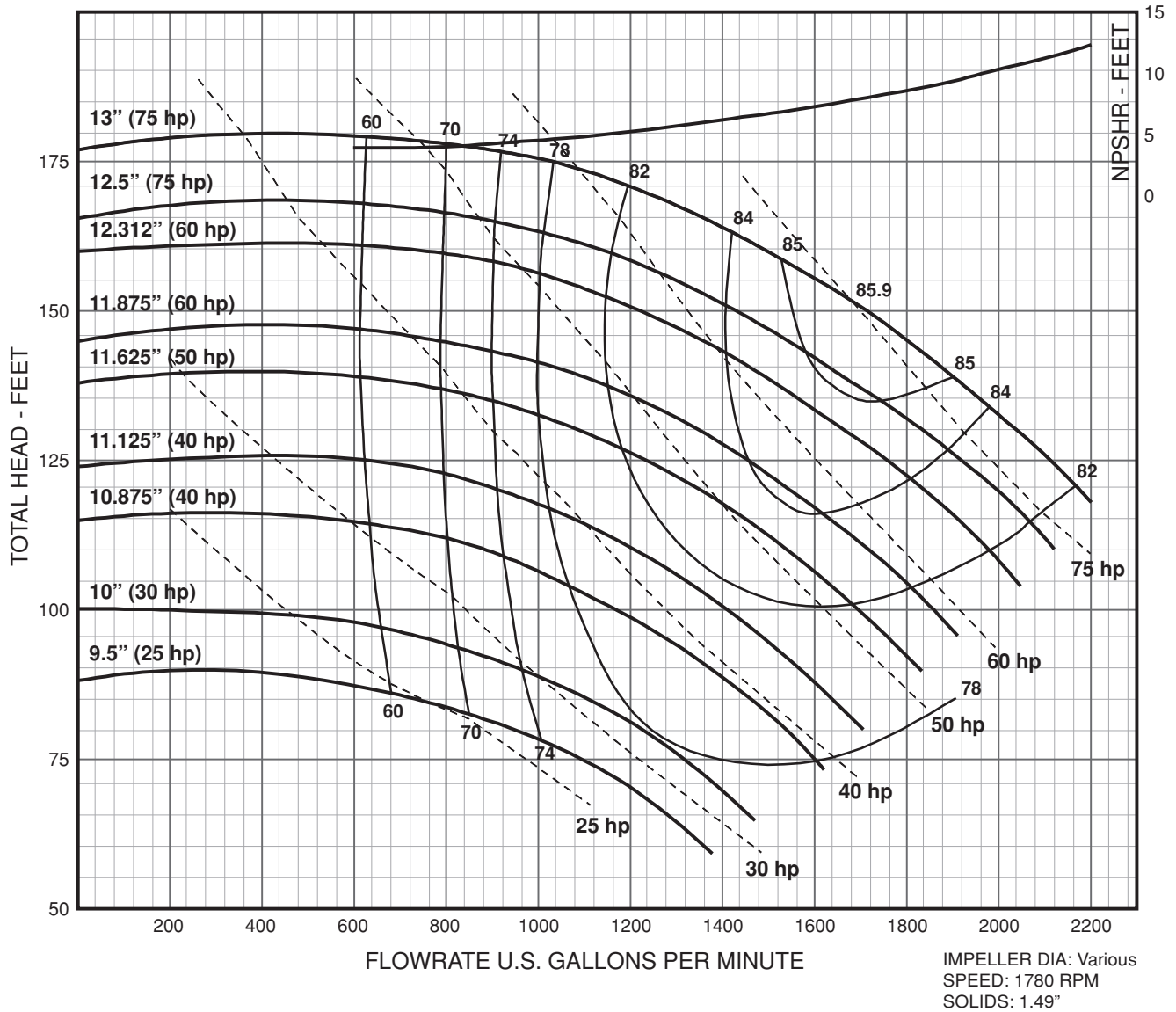


IMPELLER DIA: Various  
SPEED: 1750 RPM  
SOLIDS: 1.38"

## Close-Coupled 13" 6 x 8 - 13

**Performance Curve:**

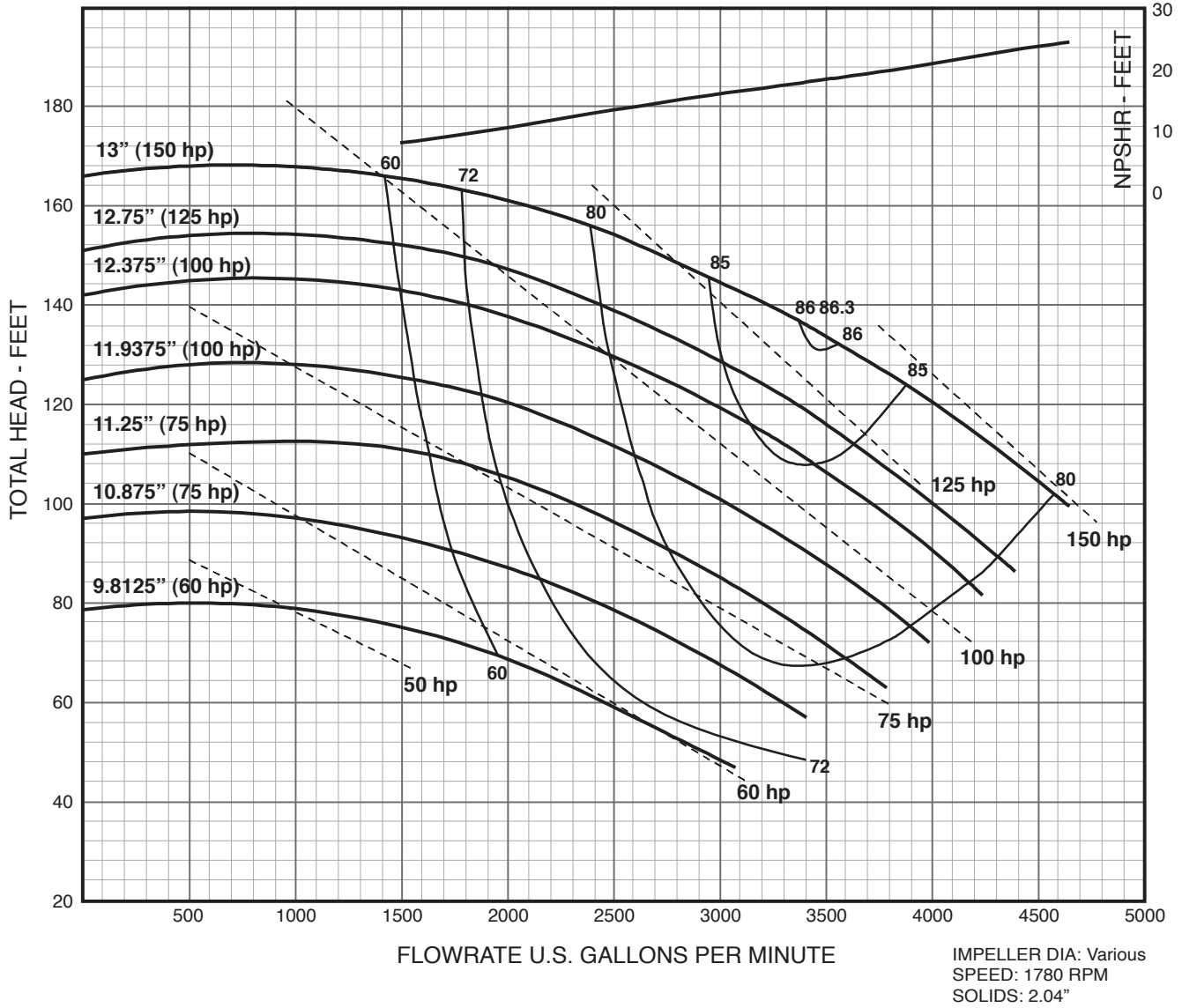
**1800**  
Nominal



## Close-Coupled 13" 8 x 10 - 13

**Performance Curve:**

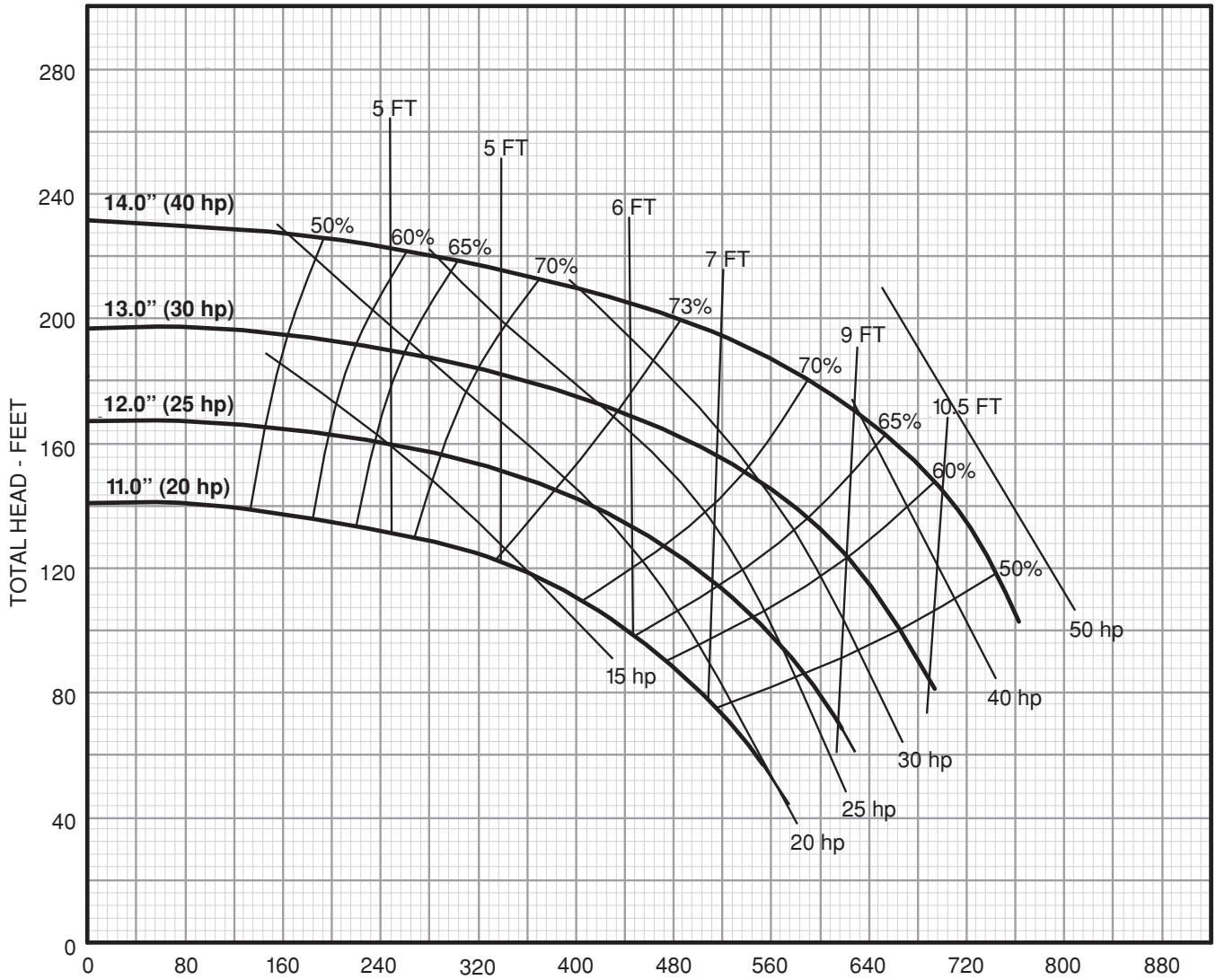
**1800**  
Nominal



## Close-Coupled 14" 3 x 5 - 14

### Performance Curve:

**1800**  
Nominal



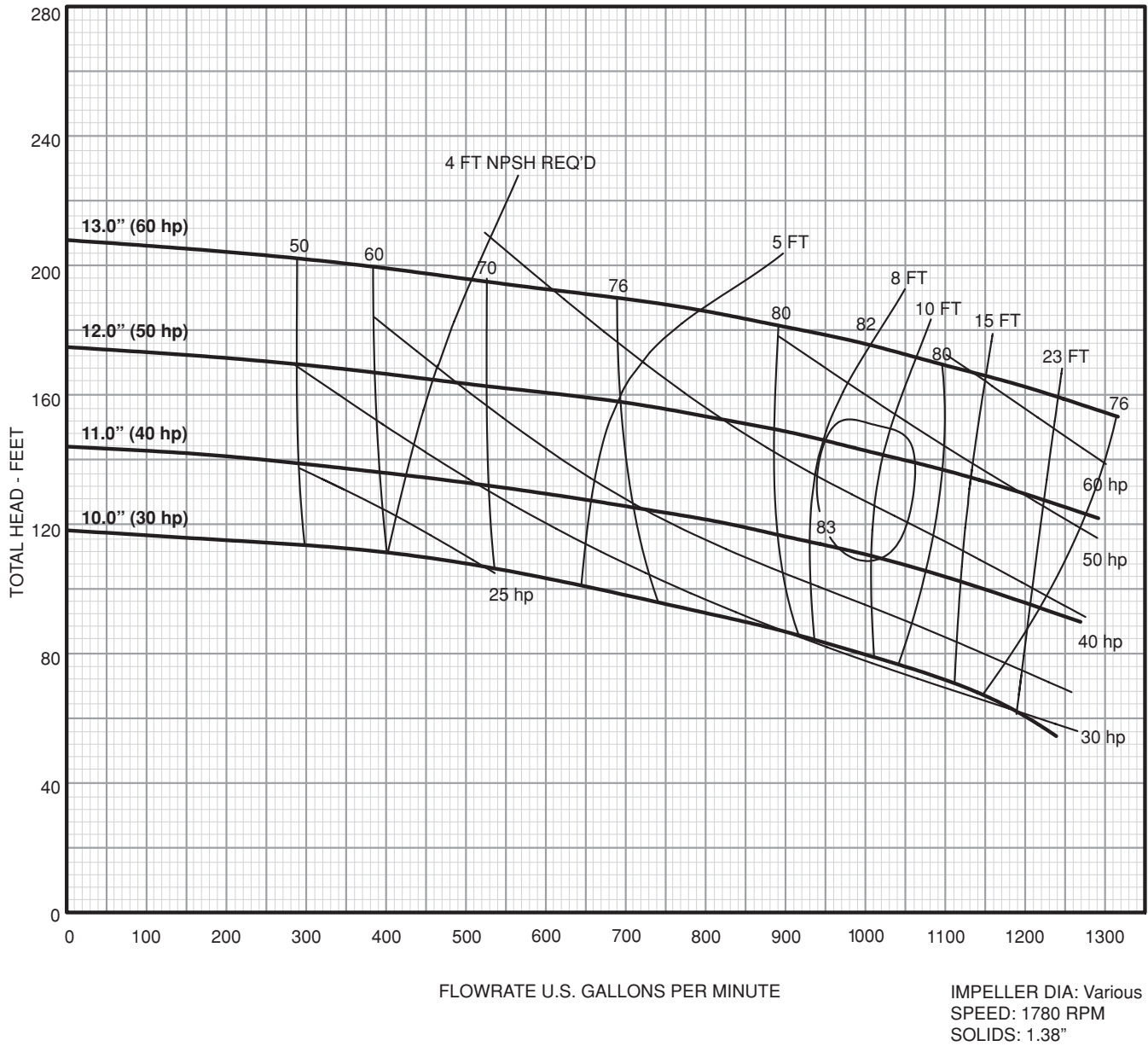
FLOWRATE U.S. GALLONS PER MINUTE

IMPELLER DIA: Various  
SPEED: 1780 RPM  
SOLIDS: .75"

## Close-Coupled 14" 4 x 6 - 14L

**Performance Curve:**

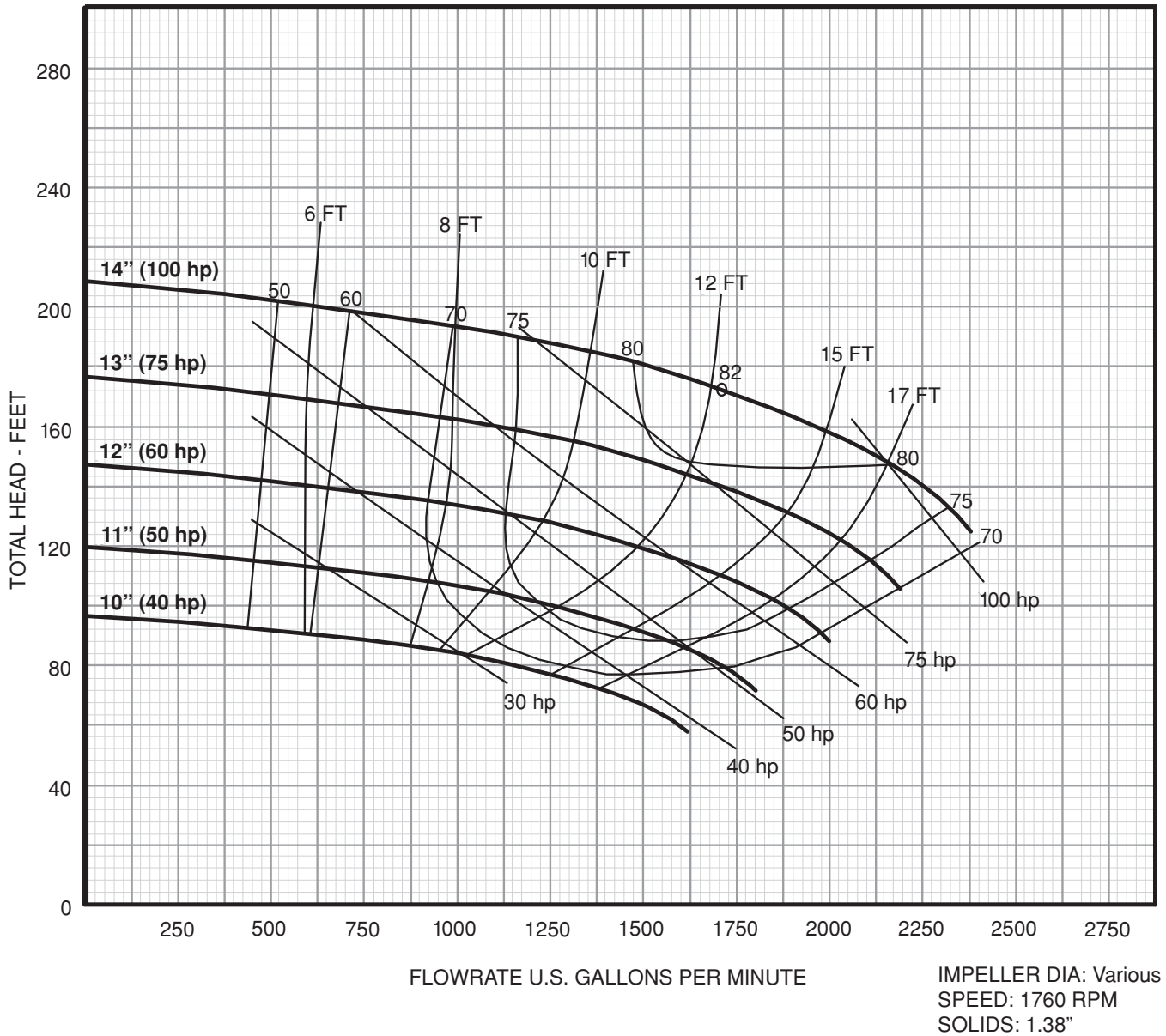
**1800**  
Nominal



## Close-Coupled 14" 6 x 6 - 14

**Performance Curve:**

**1800**  
Nominal

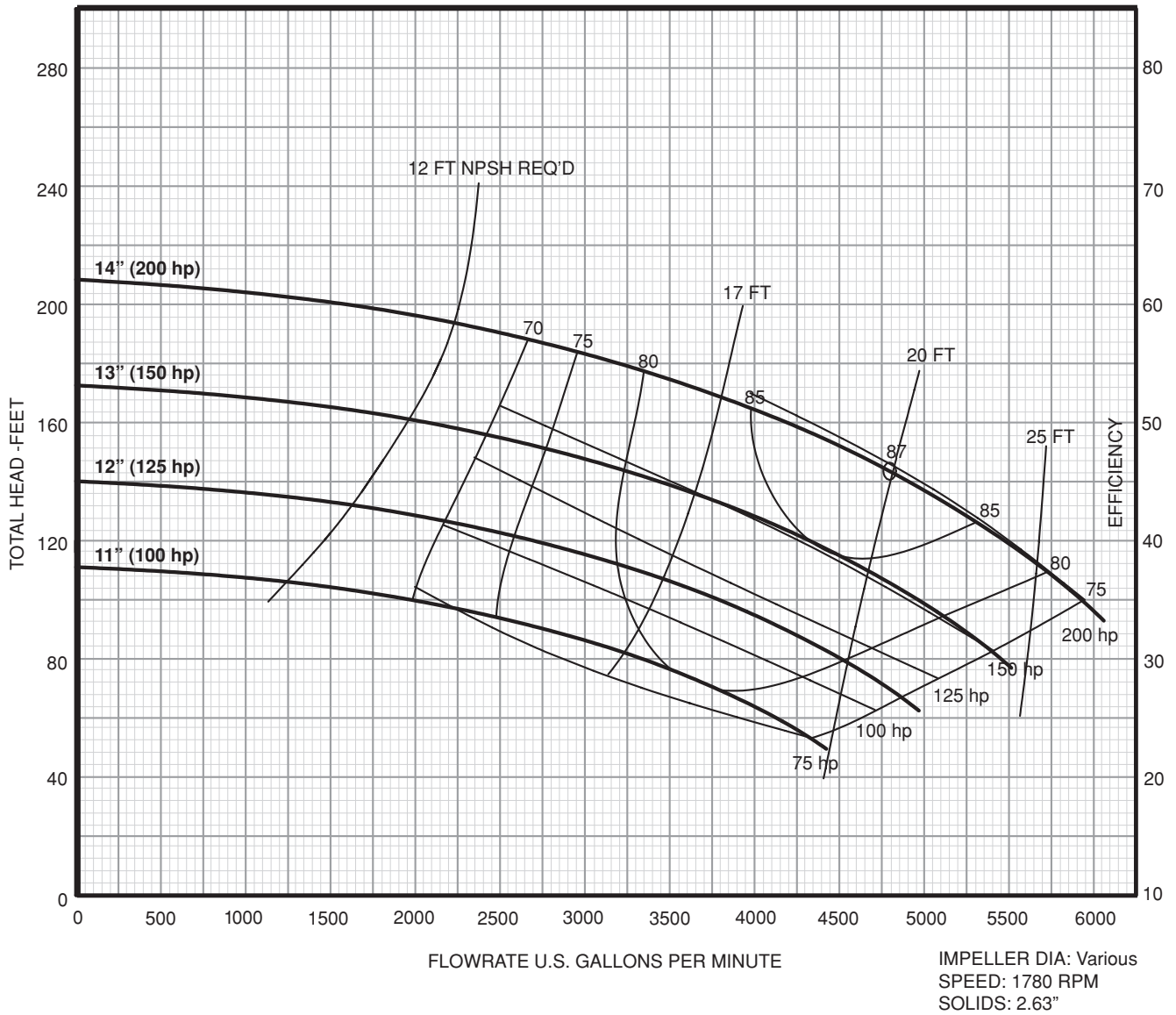




## Close-Coupled 14" 10 x 10 - 14

**Performance Curve:**

**1800**  
Nominal









**Franklin Electric**

400 East Spring Street, Bluffton, Indiana 46714  
Tel: 260.824.2900 Fax: 260.824.2909  
[www.franklin-electric.com](http://www.franklin-electric.com)